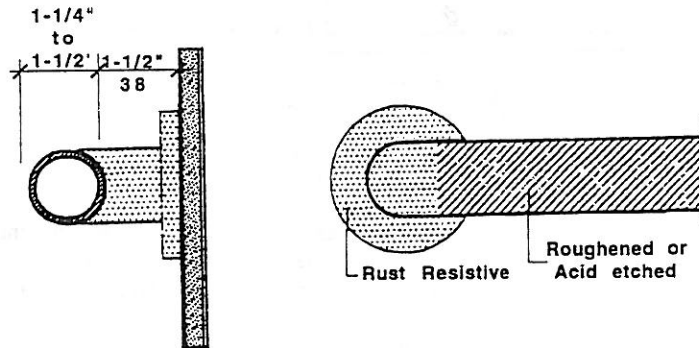


- 30.8.2 Height: Grab bars shall be set at a height of 33 to 36 inches (33" to 36" = 838mm to 914mm) above and parallel to the floor. Where a tank prevents location of the rear grab bar, a bar may be installed three inches (3" = 76mm) above the tank. Where a flushometer prevents the location of a 42 inch (42" = 1067mm) rear grab bar, one grab bar, 36 inches (36" = 914mm) shall be installed to the side of the flushometer, located three inches (3" = 76mm) from the closest edge of the flushometer.
- 30.8.3 Thickness: Grab bars shall be between 1¼ inches and 1½ inches (1¼" to 1½" = 32mm to 38mm) in outside diameter, have a ½ inch (½" = 38mm) clearance between the bar and the wall. See Fig. 30f.



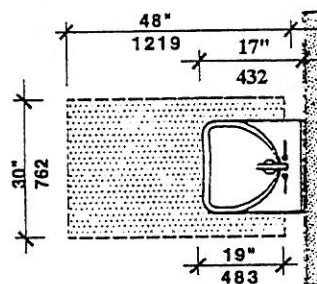
Grab Bars  
Figure 30f

- 30.8.4 Material: Grab bars shall also be non-rusting and acid-etched or roughened. Grab bars shall comply with the *structural strength* defined in 521 CMR 5, DEFINITIONS.
- 30.8.5 Dispensers or other devices shall not be mounted above the grab bars.

### 30.9. SINK

Sinks, including vanities, shall comply with the following:

- 30.9.1 *Clear floor space*: A clear floor space complying with 521 CMR 6.3 Wheelchair Turning Space shall be provided in front of a sink to allow forward approach. The *clear floor space* shall be on an *accessible route* and shall extend no more than a maximum of 19 inches (19" = 483mm) underneath the sink. See Fig. 30g.



Clear Floor Space  
Figure 30g

- 30.9.2 Height: Sinks shall be mounted with the rim no higher than 34 inches (34" = 864mm) above the finish floor. See Fig. 30h. Sinks shall also extend a minimum of 17 inches (17" = 432mm) from the wall to the front of the sink or counter.