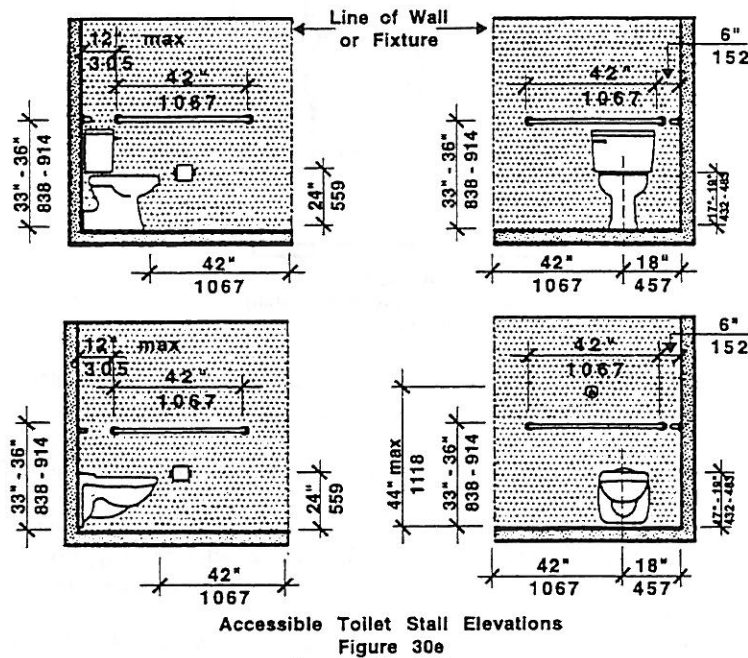


PUBLIC TOILET ROOMS

- 30.7.2 Location: The centerline of the water closet shall be located 18 inches (18" = 457mm) from the nearest side wall and at least 42 inches (42" = 1067mm) from the farthest side wall or the closest edge of an adjacent fixture. There shall be at least 42 inches (42" = 1067mm) clearance between the front edge of the water closet and the nearest wall or fixture.
- 30.7.3 Height: Water closets shall be 17 inches to 19 inches (17" to 19" = 432mm to 483mm) high, measured to the top of the water closet seat. See Fig. 30e.



- 30.7.4 Seats: Water closet seats shall not be spring mounted to return to a lifted position.
- 30.7.5 Flush Controls: Flush controls shall be hand operated or automatic and shall comply with 521 CMR 39.5, **Operation**. Controls for flush valves shall be mounted on the wide side of water closet no more than 44 inches (44" = 1118mm) above the floor.
1120mm
- 30.7.6 Toilet Paper Dispensers: Toilet paper dispensers shall be located on the side wall closest to the water closet. The centerline of the roll shall be set at a minimum height of 24 inches (24" = 610mm) above the floor. Dispensers that control delivery or that do not permit continuous paper flow are not allowed.

30.8 GRAB BARS

For the standard accessible toilet stall the water closet shall have two grab bars 42 inches (42" = 1067mm) long, one on the wall in back of the water closet and one on the side wall closest to the water closet.

For the alternate accessible toilet stall the water closet shall have two parallel grab bars, 42 inches long (42" = 1067mm) installed on the side walls and located a minimum of six inches (6" = 76mm) from the interior corner.

- 30.8.1 Location: The side grab bar shall be located a maximum of 12 inches (12" = 305mm) from the interior corner. The rear grab bar shall be located a maximum of six inches (6" = 152mm) from the interior corner.