

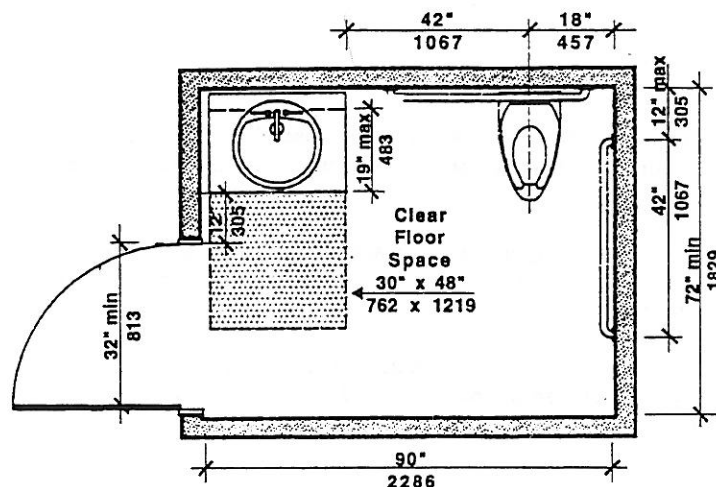
Alternate Accessible Stall
(in addition to accessible stall)
Figure 30c

- 30.6.2 *Alternate Accessible Stall*: Alternate *accessible* toilet stalls shall be 36 inches (36" = 914mm) wide with an outward swinging, self-closing door and parallel grab bars. See Fig. 30c.
- The alternate toilet stall shall have a door that swings out or slides and has a 32 inch (32" = 813mm) clear opening.
 - The stall door shall have an automatic self-closing hinge device, a pull device on both sides of the door to assist in closing and opening the door, and a lock located approximately 36 inches (36" = 914mm) above the floor that does not require tight grasping, pinching, or twisting of the wrist to operate.
 - A coat hook shall be provided at a maximum height of 54 inches (54" = 1372mm) above the floor.

30.7 WATER CLOSETS

That are required to be *accessible* shall comply with the following:

- 30.7.1 *Clear floor space*: *Clear floor space* for water closets not in stalls shall comply with Fig. 30d. *Clear floor space* may be arranged to allow either a left-handed or right-handed approach to the water closet.



Accessible Unisex Toilet Room
Figure 30d