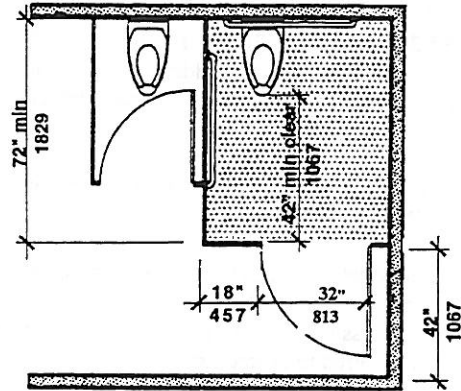


PUBLIC TOILET ROOMS

- a. *Accessible* toilet stalls shall have a door that swings out or slides and has a 32 inch (32" = 813mm) clear opening.
- b. The stall door shall have an automatic self-closing hinge device, a pull device on both sides of the door to assist in closing and opening the door, and a lock located approximately 36 inches (36" = 914mm) above the floor that does not require tight grasping, pinching, or twisting of the wrist to operate.
- c. There shall be 18 inches (18" = 457mm) of clear space on the latch pull side of the door.
- d. A coat hook shall be provided at a maximum height of 54 inches (54" = 1372mm) above the floor.



Accessible Toilet Stall (Left Approach)
Figure 30a

