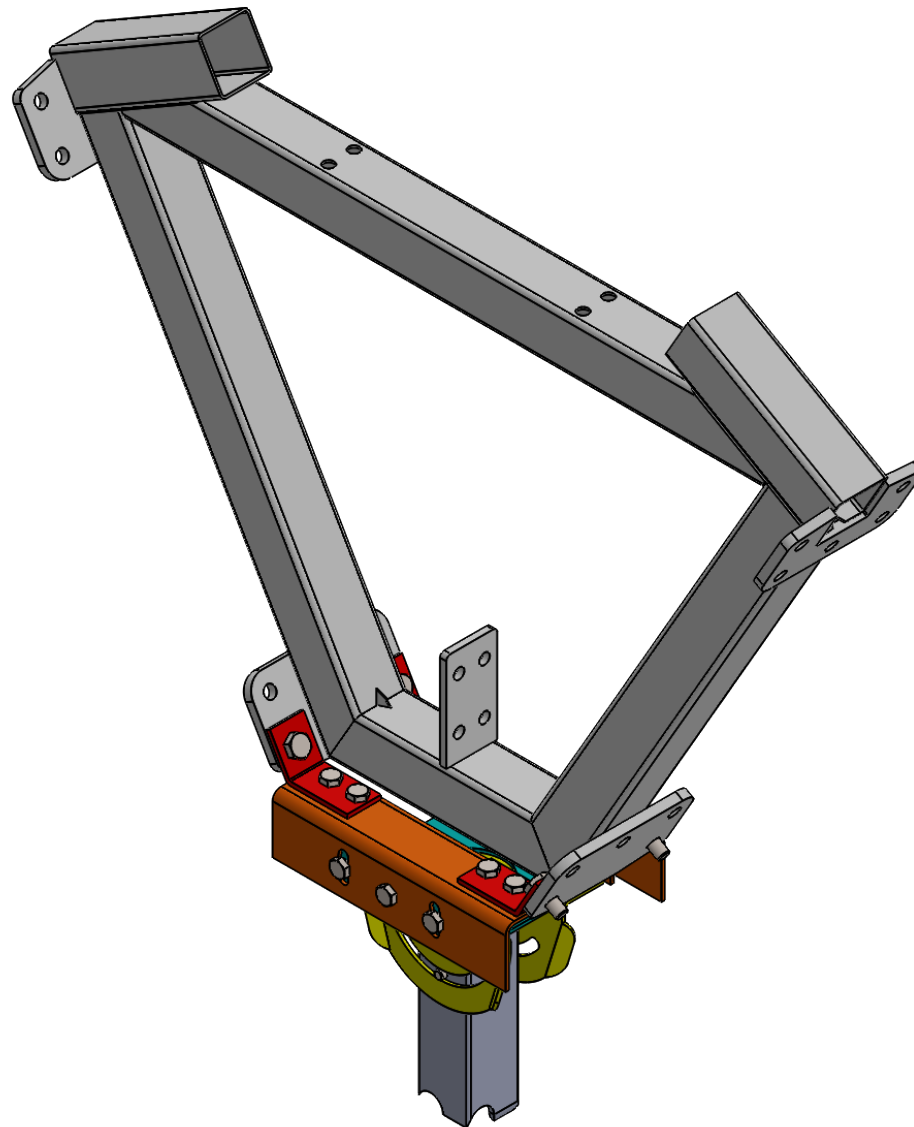


2

1



B

B

A

A

FRANKLIN ENGINEERING LLC

PROPRIETARY AND CONFIDENTIAL
THE INFORMATION CONTAINED IN THIS
DRAWING IS THE SOLE PROPERTY OF
FRANKLIN ENGINEERING. ANY
REPRODUCTION IN PART OR AS A WHOLE
WITHOUT THE WRITTEN PERMISSION OF
FRANKLIN ENGINEERING IS PROHIBITED.

UNLESS OTHERWISE SPECIFIED:

DIMENSIONS ARE IN INCHES
TOLERANCES:
FRACTIONAL $\pm 1/32$
ANGULAR: MACH ± 0.1 BEND ± 1.0
TWO PLACE DECIMAL $\pm .02$
THREE PLACE DECIMAL $\pm .01$
DO NOT SCALE DRAWING

COMMENTS:

MATERIAL

TITLE:

center section & mount

SIZE DWG. NO.

A

REV

B

SCALE: 1:8 DATE:

SHEET 1 OF 6

2

1

Same size and type but longer bolt replacing original truss bolt x4 (one bolt to be replaced at a time)

Mounting bracket to be manufacured x4

1/2x13 bolts same type and grade as those supplied with fan bracket x8

Bolts here an below supplied with fan mounting kit

Roof truss center section assembly

5 brackets supplied with fan all 3/16" thick

All bolts have a washer under the head and nut with self locking nuts. Nuts and washers not shown for simpicty.

Extention tube supplies with fan

Not all supplied bracket details are shown

PROPRIETARY AND CONFIDENTIAL

THE INFORMATION CONTAINED IN THIS DRAWING IS THE SOLE PROPERTY OF FRANKLIN ENGINEERING. ANY REPRODUCTION IN PART OR AS A WHOLE WITHOUT THE WRITTEN PERMISSION OF FRANKLIN ENGINEERING IS PROHIBITED.

UNLESS OTHERWISE SPECIFIED:

DIMENSIONS ARE IN INCHES
TOLERANCES:
FRACTIONAL $\pm 1/32$
ANGULAR: MACH ± 0.1 BEND ± 1.0
TWO PLACE DECIMAL $\pm .02$
THREE PLACE DECIMAL $\pm .01$
DO NOT SCALE DRAWING

COMMENTS:

MATERIAL

TITLE:

center section & mount

SIZE DWG. NO.

REV

A

B

SCALE: 1:4 DATE:

SHEET 2 OF 6

2

1

Roof truss, center
section assembly

Mounting bracket to
be manufactured 2x
right & 2x left.

5/8-11 x2" grade 8, x4
(one truss bolt to be
replaced at a time)

1/2x13x1.5" grade 8 bolt x8

Bolts here and below supplied with
fan mounting kit. 1/2-13 grade 8

5 brackets supplied with fan.
All 3/16" thick formed plate.

All bolts have washers under the head
and nut with self locking nuts. Nuts and
washers not shown for simplicity.

Extention tube supplies with fan.
3" square x 10'

PROPRIETARY AND CONFIDENTIAL

THE INFORMATION CONTAINED IN THIS
DRAWING IS THE SOLE PROPERTY OF
FRANKLIN ENGINEERING. ANY
REPRODUCTION IN PART OR AS A WHOLE
WITHOUT THE WRITTEN PERMISSION OF
FRANKLIN ENGINEERING IS PROHIBITED.

UNLESS OTHERWISE SPECIFIED:

DIMENSIONS ARE IN INCHES
TOLERANCES:
FRACTIONAL $\pm 1/32$
ANGULAR: MACH ± 0.1 BEND ± 1.0
TWO PLACE DECIMAL $\pm .02$
THREE PLACE DECIMAL $\pm .01$
DO NOT SCALE DRAWING

COMMENTS:

MATERIAL

TITLE:

center section & mount

SIZE DWG. NO.

A

REV

B

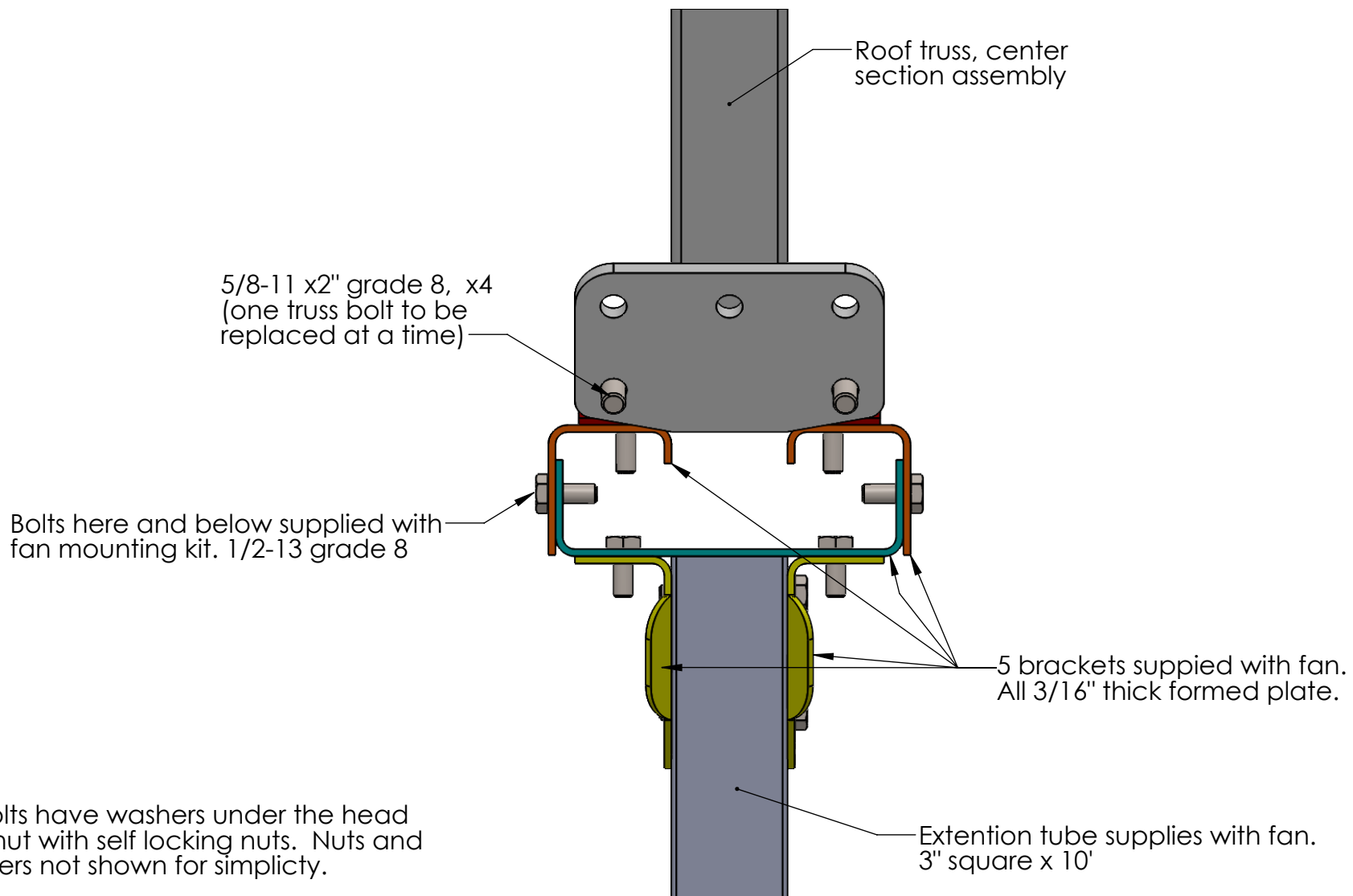
SCALE: 1:4 DATE:

SHEET 3 OF 6

FRANKLIN ENGINEERING LLC

2

1

**PROPRIETARY AND CONFIDENTIAL**

THE INFORMATION CONTAINED IN THIS DRAWING IS THE SOLE PROPERTY OF FRANKLIN ENGINEERING. ANY REPRODUCTION IN PART OR AS A WHOLE WITHOUT THE WRITTEN PERMISSION OF FRANKLIN ENGINEERING IS PROHIBITED.

UNLESS OTHERWISE SPECIFIED:

DIMENSIONS ARE IN INCHES
TOLERANCES:
FRACTIONAL $\pm 1/32$
ANGULAR: MACH ± 0.1 BEND ± 1.0
TWO PLACE DECIMAL $\pm .02$
THREE PLACE DECIMAL $\pm .01$
DO NOT SCALE DRAWING

COMMENTS:

MATERIAL

TITLE:

center section & mount

SIZE DWG. NO.

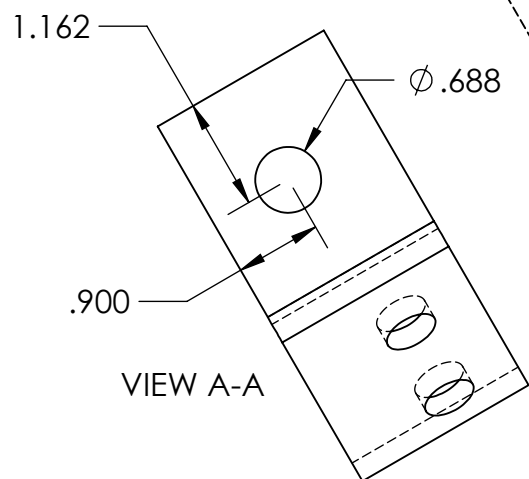
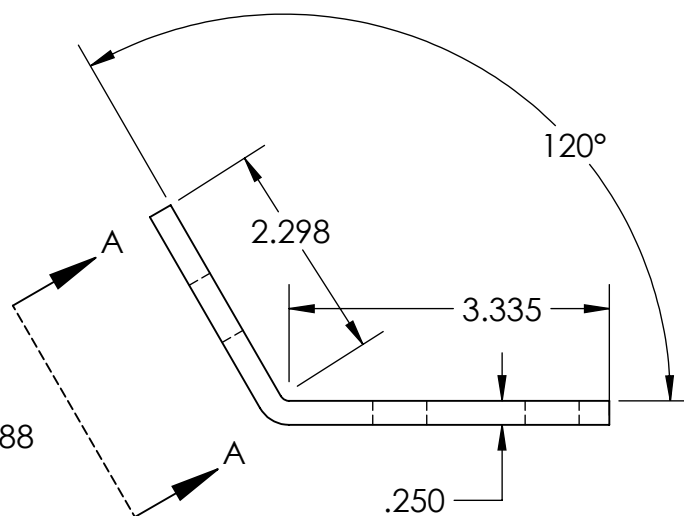
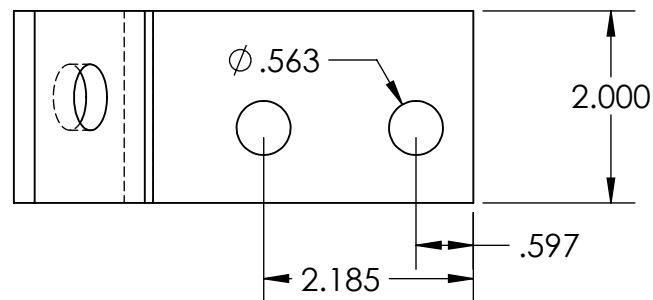
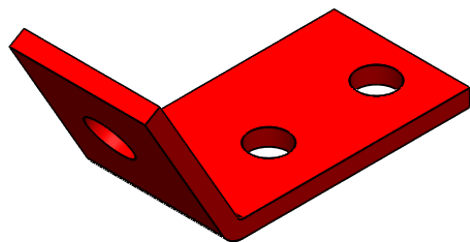
A

REV

B

SCALE: 1:4 DATE:

SHEET 4 OF 6



Hole locations approximate
Match drill at assembly

Formed from mild Steel bent to shape.
1/4"x2" x 7.75" stock nominal

PROPRIETARY AND CONFIDENTIAL
THE INFORMATION CONTAINED IN THIS
DRAWING IS THE SOLE PROPERTY OF
FRANKLIN ENGINEERING. ANY
REPRODUCTION IN PART OR AS A WHOLE
WITHOUT THE WRITTEN PERMISSION OF
FRANKLIN ENGINEERING IS PROHIBITED.

UNLESS OTHERWISE SPECIFIED:
DIMENSIONS ARE IN INCHES
TOLERANCES:
FRACTIONAL $\pm 1/32$
ANGULAR: MACH ± 0.1 BEND ± 1.0
TWO PLACE DECIMAL $\pm .02$
THREE PLACE DECIMAL $\pm .01$
DO NOT SCALE DRAWING

COMMENTS:

MATERIAL

TITLE:
right angle bracket

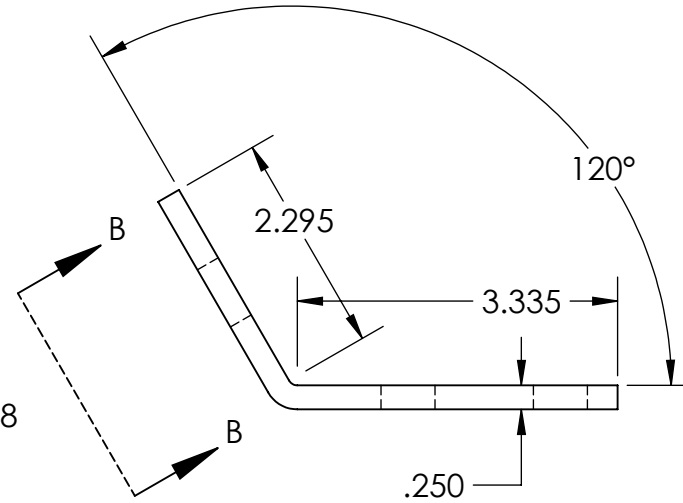
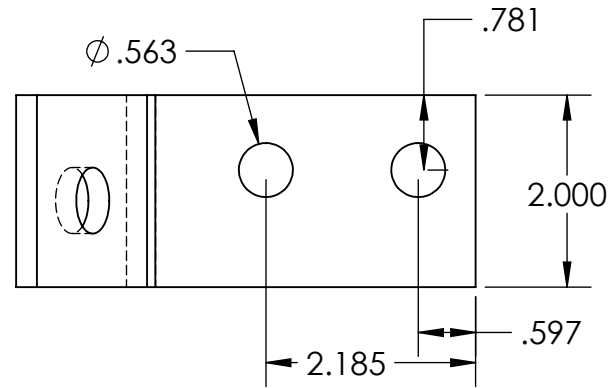
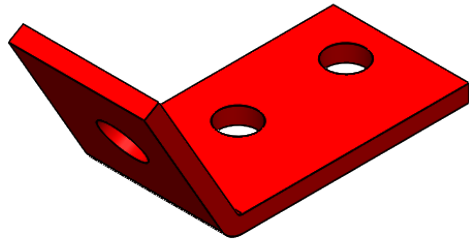
SIZE **A** DWG. NO.

SCALE: 1:2 DATE:

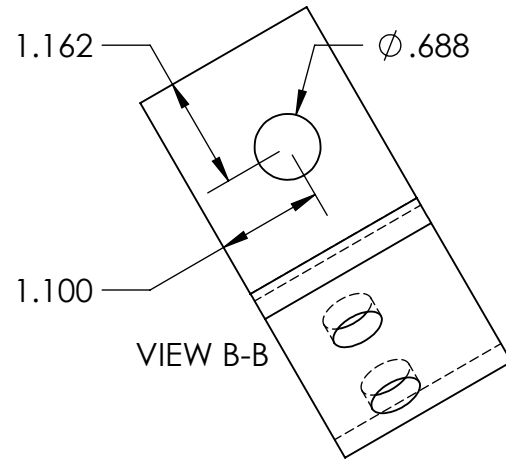
REV
B

SHEET 5 OF 6

FRANKLIN ENGINEERING LLC



Hole locations approximate
Match drill at assembly



Formed from mild Steel bent to shape.
1/4"x2" x 7.75" stock nominal

FRANKLIN ENGINEERING LLC

PROPRIETARY AND CONFIDENTIAL
THE INFORMATION CONTAINED IN THIS
DRAWING IS THE SOLE PROPERTY OF
FRANKLIN ENGINEERING. ANY
REPRODUCTION IN PART OR AS A WHOLE
WITHOUT THE WRITTEN PERMISSION OF
FRANKLIN ENGINEERING IS PROHIBITED.

UNLESS OTHERWISE SPECIFIED:

DIMENSIONS ARE IN INCHES
TOLERANCES:
FRACTIONAL $\pm 1/32$
ANGULAR: MACH ± 0.1 BEND ± 1.0
TWO PLACE DECIMAL $\pm .02$
THREE PLACE DECIMAL $\pm .01$
DO NOT SCALE DRAWING

COMMENTS:

MATERIAL

TITLE:

Left angle bracket

SIZE
A

DWG. NO.

REV
B

SCALE: 1:2 DATE:

SHEET 6 OF 6